

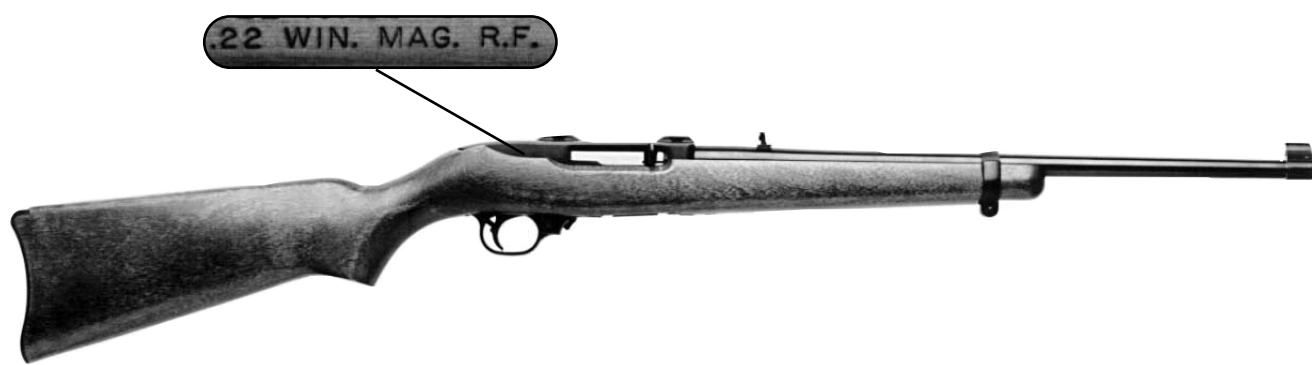
BLUED  
STEEL



CALIBER  
.22 WINCHESTER  
MAGNUM RIMFIRE

# **RUGER® MODEL 10/22® MAGNUM**

**SPECIAL INSTRUCTIONS FOR THE  
RUGER® 10/22 MAGNUM ONLY**



**DO NOT USE THIS BOOKLET FOR RUGER 10/22 CARBINES IN CALIBER .22 LONG RIFLE**

All parts orders for the **RUGER 10/22 MAGNUM** rifle should be sent to: Sturm, Ruger & Co., Inc., Product Service Department, 411 Sunapee Street, Newport, New Hampshire 03773, 603-865-2442. We cannot comply with open account or C.O.D. orders. Payment in the form of a check, money order, Visa or MasterCard must accompany your order. Credit card orders must include the account number, expiration date and whether it is a Visa or MasterCard account. Minimum parts order is \$1.00 plus \$3.50 shipping and handling charge. Order parts by Part Name and Part Number and include the entire serial number of the firearm for which the parts are being ordered and specify whether blued or stainless steel. The price shown for parts does not include the minimum net labor charge of \$15.00 plus \$5.00 shipping and handling charge if parts are factory fitted. All factory fitted parts are fit on an exchange basis only. We will not return the replaced parts. The charge for metal refinishing is \$35.00 plus a \$5.00 shipping and handling charge. Custom gunsmithing service or nonstandard alterations are **NOT AVAILABLE**.

Because the 10/22 Magnum receiver (part number B00111) is a serial-numbered component, it is defined as a “firearm” by Federal Law and is not sold as a separate component.

**BARREL NOTE:** All barrels are marked with safety message. (“Before using gun, read warnings in Instruction Manual available free from Sturm, Ruger & Co., Inc., Southport, CT, USA”.)

Design, specifications and prices are subject to change without notice. The Sturm, Ruger & Company “LOGO”, “RUGER” and “10/22” are registered U.S. trademarks.

**STURM, RUGER & Company, Inc.  
Southport, Connecticut 06490 U.S.A.**

# MODEL 10/22<sup>®</sup> MAGNUM

## COMPONENT PARTS AND SUGGESTED RETAIL PRICES

ORDER THESE PARTS FROM NEWPORT PLANT

Part Name	Part No.	Model	Price
Barrel	0B8004	10/22 Magnum	\$ 39.50
Barrel Band	L06801	10/22 Magnum	6.75
Barrel Band Screw	B-69	10/22 Magnum	.50
Barrel Retainer, V-Block	B-66	10/22 Magnum	2.50
Barrel Retainer Screw, 2 Req'd.	B-67	10/22 Magnum	ea. .50
Bolt Only	B01006	10/22 Magnum	135.00
Bolt Assembly, Complete	B21006	10/22 Magnum	141.50
Bolt Lock	B04106	10/22 Magnum	1.00
Bolt Lock Spring	B-42	10/22 Magnum	.50
Bolt Stop Pin	B-46	10/22 Magnum	.50
Butt Plate	C-63	10/22 Magnum	2.50
Butt Plate Screw, 2 Req'd.	B-64	10/22 Magnum	ea. .50
▲ Cable Lock, 10"	PM091A	10/22 Magnum	5.95
Cocking Handle, Guide Rod & Recoil Spring Assembly	B20705	10/22 Magnum	12.25
Disconnecter	B-25	10/22 Magnum	2.50
Disconnecter Pivot Pin	KE02800	10/22 Magnum	.50
Disconnecter Spring	B-24	10/22 Magnum	.50
Ejector	B-8	10/22 Magnum	.50
Ejector Cross Pin, Not Illustrated	B-22	10/22 Magnum	.50
Escutcheon	B-51	10/22 Magnum	.50
Extractor	B-14	10/22 Magnum	.50
Extractor Plunger	B-16	10/22 Magnum	.50
Extractor Spring	B-15	10/22 Magnum	.50
Firing Pin	B01106	10/22 Magnum	2.25
Firing Pin Rebound Spring	A20000	10/22 Magnum	.50
Firing Pin Stop Pin	B-13	10/22 Magnum	.50
Front Mounting Screw	J04701	10/22 Magnum	.75
Front Sight	J06001	10/22 Magnum	4.50
Hammer	B-17A	10/22 Magnum	5.00
Hammer Bushing, 2 Req'd.	B-43	10/22 Magnum	ea. .50
Hammer Pivot Pin	B-19	10/22 Magnum	.50
Hammer Spring	B04406	10/22 Magnum	.50
Hammer Strut	B-18	10/22 Magnum	.50
Hammer Strut Washer	B-45	10/22 Magnum	.50
▲ Magazine, Complete, 9-Shot Capacity	JMX-1	10/22 Magnum	13.70
Magazine Latch	B-34	10/22 Magnum	4.50
Magazine Latch Pivot & Ejector Pin, 2 Req'd.	B-35	10/22 Magnum	ea. .50
Magazine Latch Plunger	B-36	10/22 Magnum	1.00
Magazine Latch Plunger Spring	B-37	10/22 Magnum	.50
Rear Sight	D-77	10/22 Magnum	10.50
Receiver	B00111	10/22 Magnum	Not Offered For Sale
Receiver Cross Pin, 2 Req'd.	B-5	10/22 Magnum	ea. .50
Safety	B-52	10/22 Magnum	2.00

▲ Ruger Accessories should be ordered through a Ruger Distributor. Refer to booklet B1 for a list of Distributors. Refer to booklet B2 for a list of Parts Source. For a complete list of Ruger Accessories refer to booklet A1.

# MODEL 10/22<sup>®</sup> MAGNUM

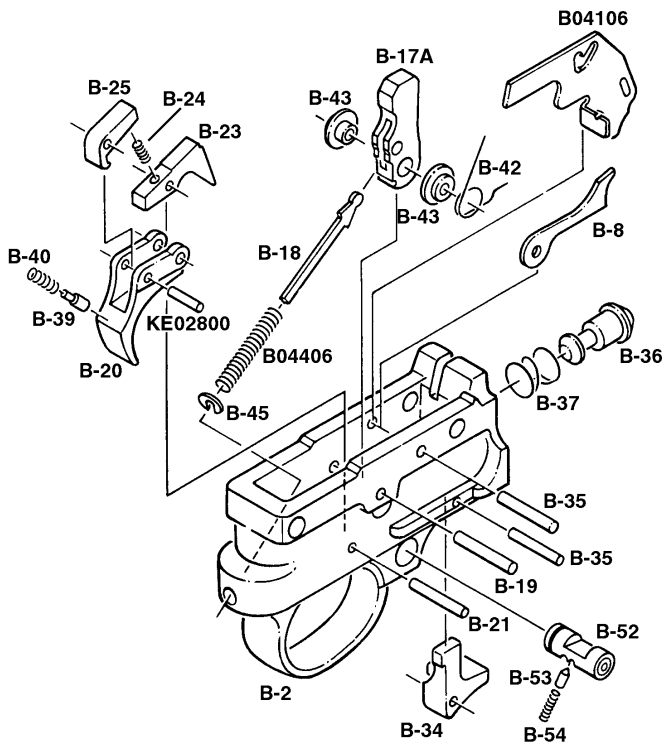
## COMPONENT PARTS AND SUGGESTED RETAIL PRICES

ORDER THESE PARTS FROM NEWPORT PLANT

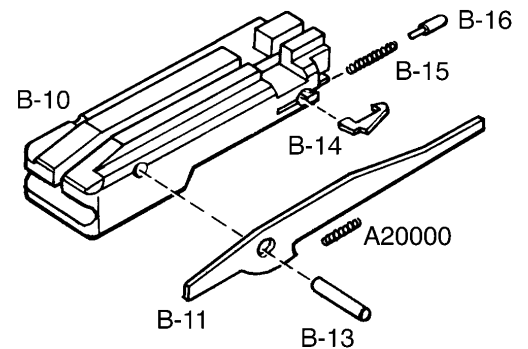
Part Name	Part No.	Model	Price
Safety Detent Plunger	B-53	10/22 Magnum	\$ .50
Safety Detent Plunger Spring	B-54	10/22 Magnum	.50
▲ Scope Rings, Medium Rings Accomodate 42mm Lens	S100RM	10/22 Magnum	49.40
Scope Ring Clamp	D-74	10/22 Magnum	2.00
Scope Ring Nut	D-73	10/22 Magnum	2.00
Scope Ring Screws, 8 Req'd	D-76	10/22 Magnum	ea. .50
Sear	B-23	10/22 Magnum	4.00
Stock Assembly, Complete — Standard Carbine, Birch	B20435	10/22 Magnum	69.50
Trigger	B-20	10/22 Magnum	5.00
Trigger Assembly, Complete	B-20D	10/22 Magnum	11.75
Trigger Guard	B-2	10/22 Magnum	14.50
Trigger Guard Assembly, Complete	B-2M	10/22 Magnum	41.50
Trigger Pivot Pin	B-21	10/22 Magnum	.50
Trigger Plunger	B-39	10/22 Magnum	.50
Trigger Plunger Spring	B-40	10/22 Magnum	.50

▲ Ruger Accessories should be ordered through a Ruger Distributor. Refer to booklet B1 for a list of Distributors. Refer to booklet B2 for a list of Parts Source. For a complete list of Ruger Accessories refer to booklet A1.

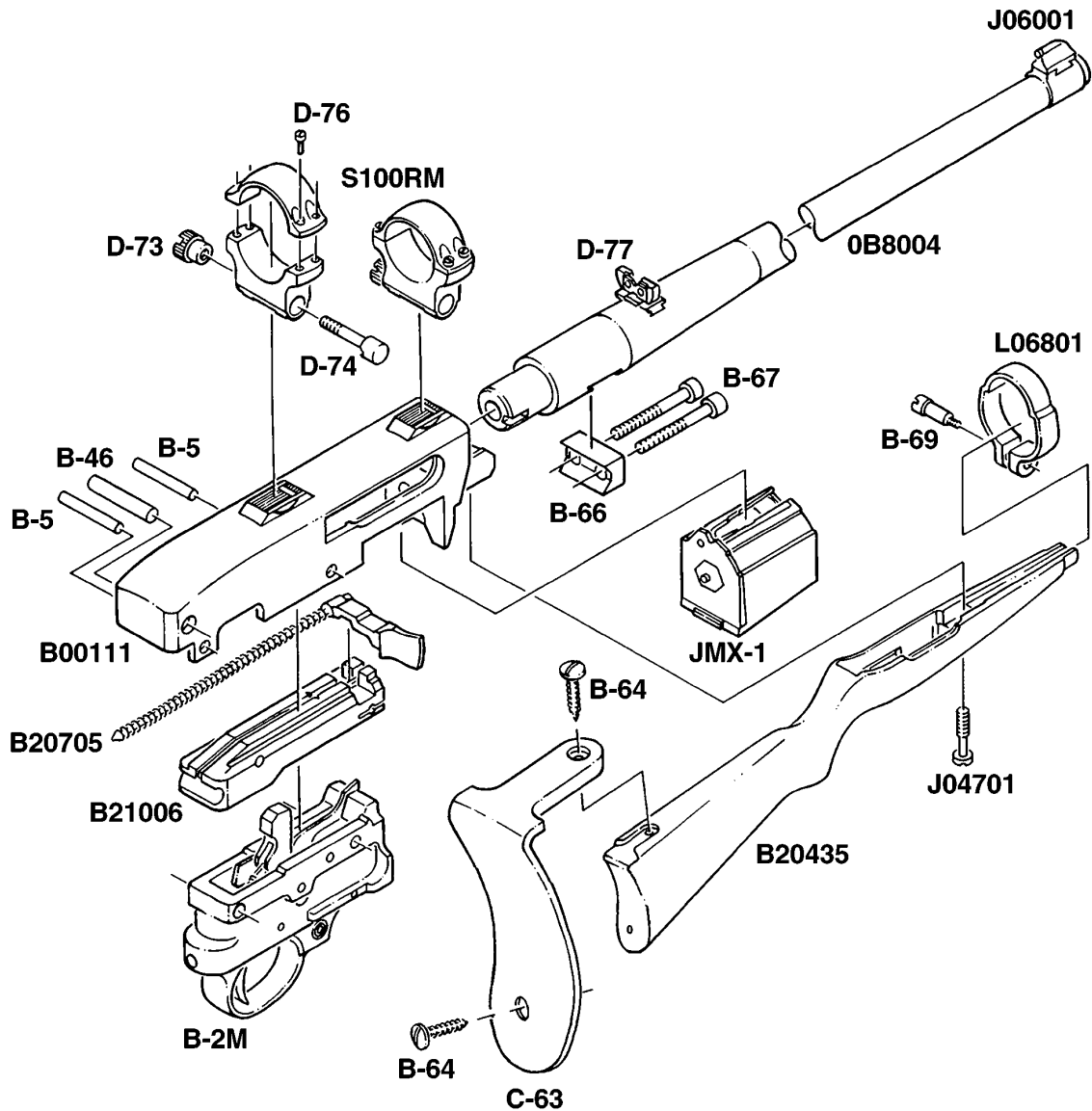
## TRIGGER GUARD ASSEMBLY



## BOLT ASSEMBLY



# MODEL 10/22<sup>®</sup> MAGNUM



## WARNING—PARTS PURCHASERS



It is the purchaser's responsibility to be absolutely certain that any parts ordered from the factory are correctly fitted and installed. Firearms are complicated mechanisms and IMPROPER FITTING OF PARTS MAY RESULT IN A DANGEROUS MALFUNCTIONING, DAMAGE TO THE FIREARM AND SERIOUS INJURY TO THE SHOOTER AND OTHER PERSONS. The purchaser and installer of parts must accept full responsibility for the correct adjustment and functioning of the firearm after such installation.

**PARTS MUST FIT CORRECTLY**